

Player Statistics



Group E

Serbia - Switzerland 1 : 2 (1 : 0)

26 22 JUN 2018 20:00 Kaliningrad / Kaliningrad Stadium / RUS



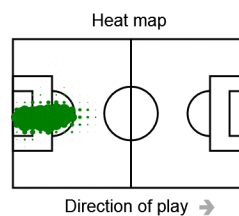
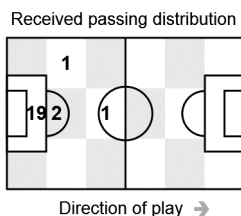
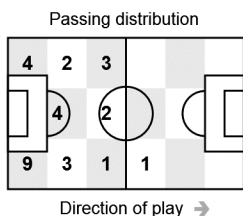
Switzerland

Time played 97'59"

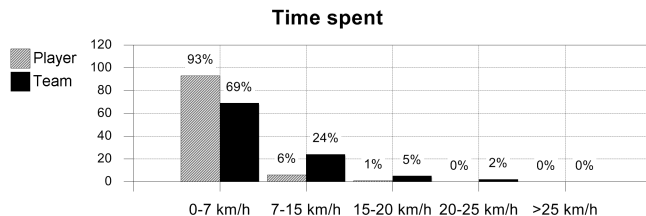
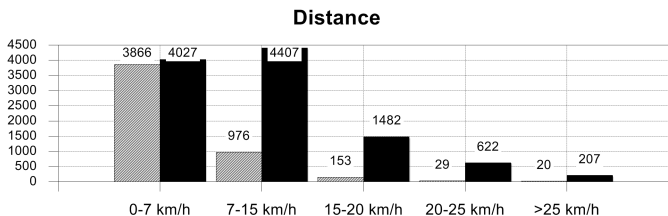
1 Yann SOMMER

Goalkeeper

	1st half	2nd half	Total	Team total	Team avg *
Goal(s) scored				2	
Shots				20	
Assist(s)				1	
Offside(s)				3	
Save(s)	2		2	2	
Yellow card				1	
2Y+R/Red card					
Foul(s) committed				12	
Delivery/solo runs into the attacking third				34/14	3.40/1.40
Delivery/solo runs into the penalty area				9/1	0.90/0.10
Tackles gaining/not gaining the ball				4/10	0.40/1.00
Tackles suffered losing/not losing the ball				4/7	0.40/0.70
Clearances completed/attempted	2/2	2/2	4/4	16/17	1.20/1.30



Activities	1st half	2nd half	Total	Team total	Team avg *
Total time played (mins)	47'07"	50'52"	97'59"	97'59"	
Zone 1: 0-7 km/h time spent (%)	94%	93%	93%	69%	
Zone 2: 7-15 km/h time spent (%)	6%	6%	6%	24%	
Zone 3: 15-20 km/h time spent (%)		1%	1%	5%	
Zone 4: 20-25 km/h time spent (%)				2%	
Zone 5: >25 km/h time spent (%)					
Distance covered (metres)	2,384	2,660	5,044	112,490	10,745
Zone 1: 0-7 km/h distance covered (meters)	1,908	1,958	3,866	44,135	4,027
Zone 2: 7-15 km/h distance covered (meters)	446	530	976	45,046	4,407
Zone 3: 15-20 km/h distance covered (meters)	29	124	153	14,978	1,482
Zone 4: 20-25 km/h distance covered (meters)		29	29	6,246	622
Zone 5: >25 km/h distance covered (meters)	1	19	20	2,085	207
Top speed (km/h)	10.08	27.00	27.00	30.60	27.86
Sprints		2	2	366	36



* Team average does not include goalkeeper

FIFA does not vouch for the accuracy of technical statistics compiled in association with its competition results system partner.



Player Statistics



Group E

Serbia - Switzerland 1 : 2 (1 : 0)

26 22 JUN 2018 20:00 Kaliningrad / Kaliningrad Stadium / RUS



Switzerland

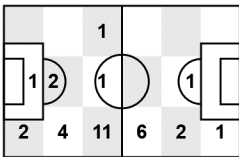
Time played 97'59"

2 Stephan LICHTSTEINER

Defender

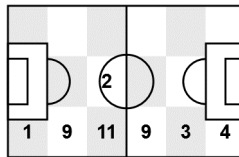
	1st half	2nd half	Total	Team total	Team avg *
Goal(s) scored				2	
Shots	1		1	20	
Assist(s)				1	
Offside(s)				3	
Save(s)				2	
Yellow card				1	
2Y+R/Red card					
Foul(s) committed				12	
Delivery/solo runs into the attacking third	4/0	3/0	7/0	34/14	3.40/1.40
Delivery/solo runs into the penalty area				9/1	0.90/0.10
Tackles gaining/not gaining the ball	1/1	0/2	1/3	4/10	0.40/1.00
Tackles suffered losing/not losing the ball	0/1	1/1	1/2	4/7	0.40/0.70
Clearances completed/attempted				16/17	1.20/1.30

Passing distribution



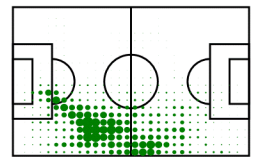
Direction of play →

Received passing distribution



Direction of play →

Heat map

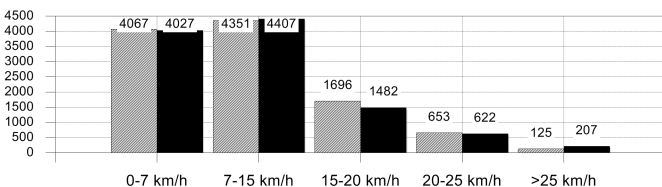


Direction of play →

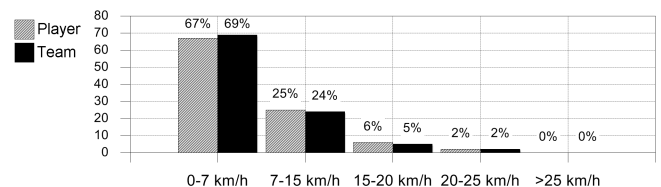
Activities

	1st half	2nd half	Total	Team total	Team avg *
Total time played (mins)	47'07"	50'52"	97'59"	97'59"	
Zone 1: 0-7 km/h time spent (%)	65%	68%	67%	69%	
Zone 2: 7-15 km/h time spent (%)	26%	24%	25%	24%	
Zone 3: 15-20 km/h time spent (%)	7%	6%	6%	5%	
Zone 4: 20-25 km/h time spent (%)	2%	2%	2%	2%	
Zone 5: >25 km/h time spent (%)					
Distance covered (metres)	5,433	5,459	10,892	112,490	10,745
Zone 1: 0-7 km/h distance covered (meters)	1,958	2,109	4,067	44,135	4,027
Zone 2: 7-15 km/h distance covered (meters)	2,201	2,150	4,351	45,046	4,407
Zone 3: 15-20 km/h distance covered (meters)	882	814	1,696	14,978	1,482
Zone 4: 20-25 km/h distance covered (meters)	361	292	653	6,246	622
Zone 5: >25 km/h distance covered (meters)	31	94	125	2,085	207
Top speed (km/h)	22.86	25.92	25.92	30.60	27.86
Sprints	20	17	37	366	36

Distance



Time spent



* Team average does not include goalkeeper

FIFA does not vouch for the accuracy of technical statistics compiled in association with its competition results system partner.



Player Statistics



Group E

Serbia - Switzerland 1 : 2 (1 : 0)

26 22 JUN 2018 20:00 Kaliningrad / Kaliningrad Stadium / RUS



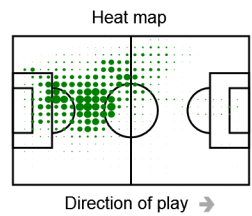
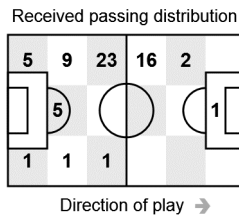
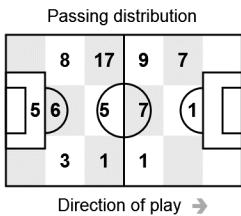
Switzerland

Time played 97'59"

5 Manuel AKANJI

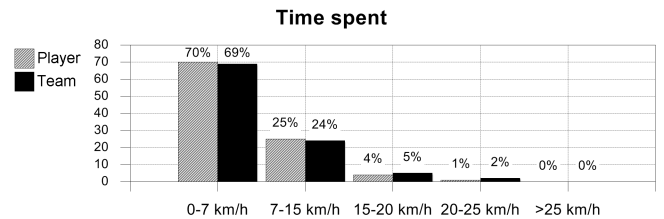
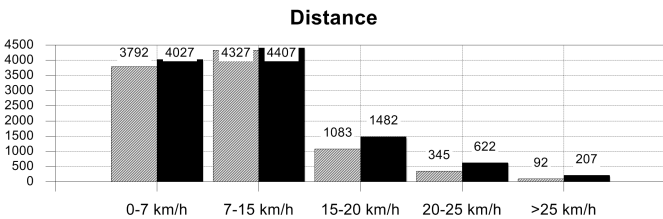
Defender

	1st half	2nd half	Total	Team total	Team avg *
Goal(s) scored				2	
Shots	1	1	2	20	
Assist(s)				1	
Offside(s)				3	
Save(s)				2	
Yellow card				1	
2Y+R/Red card					
Foul(s) committed	2		2	12	
Delivery/solo runs into the attacking third	4/2	2/0	6/2	34/14	3.40/1.40
Delivery/solo runs into the penalty area				9/1	0.90/0.10
Tackles gaining/not gaining the ball	0/1	0/2	0/3	4/10	0.40/1.00
Tackles suffered losing/not losing the ball				4/7	0.40/0.70
Clearances completed/attempted	1/1	2/2	3/3	16/17	1.20/1.30



Activities

	1st half	2nd half	Total	Team total	Team avg *
Total time played (mins)	47'07"	50'52"	97'59"	97'59"	
Zone 1: 0-7 km/h time spent (%)	67%	72%	70%	69%	
Zone 2: 7-15 km/h time spent (%)	28%	23%	25%	24%	
Zone 3: 15-20 km/h time spent (%)	4%	4%	4%	5%	
Zone 4: 20-25 km/h time spent (%)	1%	1%	1%	2%	
Zone 5: >25 km/h time spent (%)					
Distance covered (metres)	4,758	4,881	9,639	112,490	10,745
Zone 1: 0-7 km/h distance covered (meters)	1,734	2,058	3,792	44,135	4,027
Zone 2: 7-15 km/h distance covered (meters)	2,273	2,054	4,327	45,046	4,407
Zone 3: 15-20 km/h distance covered (meters)	586	497	1,083	14,978	1,482
Zone 4: 20-25 km/h distance covered (meters)	154	191	345	6,246	622
Zone 5: >25 km/h distance covered (meters)	11	81	92	2,085	207
Top speed (km/h)	20.84	30.60	30.60	30.60	27.86
Sprints	7	11	18	366	36



* Team average does not include goalkeeper

FIFA does not vouch for the accuracy of technical statistics compiled in association with its competition results system partner.



Player Statistics



Group E

Serbia - Switzerland 1 : 2 (1 : 0)

26 22 JUN 2018 20:00 Kaliningrad / Kaliningrad Stadium / RUS



Switzerland

9 Haris SEFEROVIC

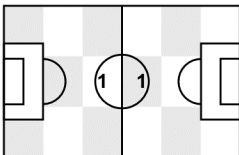
Forward

Time played 47'07"

Substituted by 18 Mario GAVRANOVIC

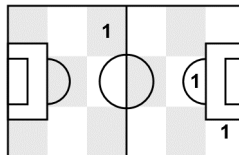
	1st half	2nd half	Total	Team total	Team avg *
Goal(s) scored				2	
Shots				20	
Assist(s)				1	
Offside(s)	1		1	3	
Save(s)				2	
Yellow card				1	
2Y+R/Red card					
Foul(s) committed	1		1	12	
Delivery/solo runs into the attacking third				34/14	3.40/1.40
Delivery/solo runs into the penalty area				9/1	0.90/0.10
Tackles gaining/not gaining the ball				4/10	0.40/1.00
Tackles suffered losing/not losing the ball				4/7	0.40/0.70
Clearances completed/attempted	0/1		0/1	16/17	1.20/1.30

Passing distribution



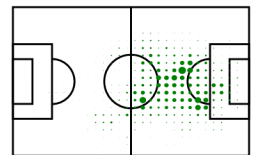
Direction of play →

Received passing distribution



Direction of play →

Heat map

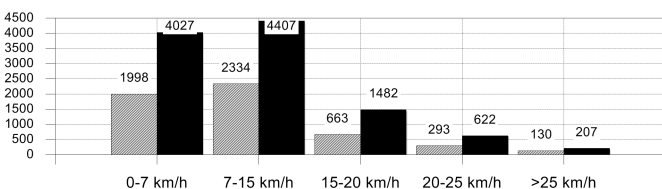


Direction of play →

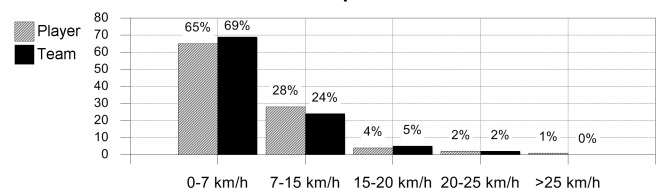
Activities

	1st half	2nd half	Total	Team total	Team avg *
Total time played (mins)	47'07"		47'07"	97'59"	
Zone 1: 0-7 km/h time spent (%)	65%		65%	69%	
Zone 2: 7-15 km/h time spent (%)	28%		28%	24%	
Zone 3: 15-20 km/h time spent (%)	4%		4%	5%	
Zone 4: 20-25 km/h time spent (%)	2%		2%	2%	
Zone 5: >25 km/h time spent (%)	1%		1%		
Distance covered (metres)	5,418		5,418	112,490	10,745
Zone 1: 0-7 km/h distance covered (meters)	1,998		1,998	44,135	4,027
Zone 2: 7-15 km/h distance covered (meters)	2,334		2,334	45,046	4,407
Zone 3: 15-20 km/h distance covered (meters)	663		663	14,978	1,482
Zone 4: 20-25 km/h distance covered (meters)	293		293	6,246	622
Zone 5: >25 km/h distance covered (meters)	130		130	2,085	207
Top speed (km/h)	27.00		27.00	30.60	27.86
Sprints	20		20	366	36

Distance



Time spent



* Team average does not include goalkeeper

FIFA does not vouch for the accuracy of technical statistics compiled in association with its competition results system partner.



Player Statistics



Group E

Serbia - Switzerland 1 : 2 (1 : 0)

26 22 JUN 2018 20:00 Kaliningrad / Kaliningrad Stadium / RUS



Switzerland

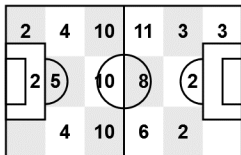
Time played 97'59"

10 Granit XHAKA

Midfield

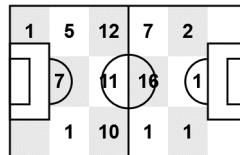
	1st half	2nd half	Total	Team total	Team avg *
Goal(s) scored		1	1	2	
Shots	1	1	2	20	
Assist(s)				1	
Offside(s)				3	
Save(s)				2	
Yellow card				1	
2Y+R/Red card					
Foul(s) committed				12	
Delivery/solo runs into the attacking third	3/0	1/1	4/1	34/14	3.40/1.40
Delivery/solo runs into the penalty area				9/1	0.90/0.10
Tackles gaining/not gaining the ball				4/10	0.40/1.00
Tackles suffered losing/not losing the ball	0/1		0/1	4/7	0.40/0.70
Clearances completed/attempted				16/17	1.20/1.30

Passing distribution



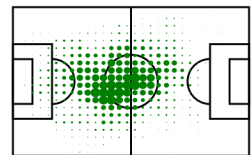
Direction of play →

Received passing distribution



Direction of play →

Heat map

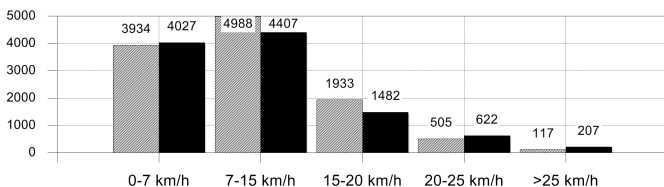


Direction of play →

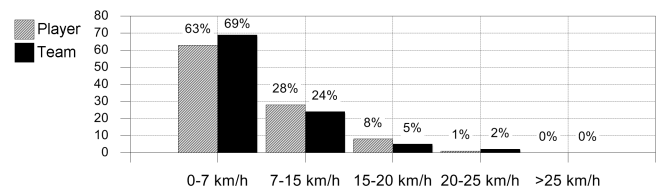
Activities

	1st half	2nd half	Total	Team total	Team avg *
Total time played (mins)	47'07"	50'52"	97'59"	97'59"	
Zone 1: 0-7 km/h time spent (%)	61%	65%	63%	69%	
Zone 2: 7-15 km/h time spent (%)	30%	26%	28%	24%	
Zone 3: 15-20 km/h time spent (%)	8%	7%	8%	5%	
Zone 4: 20-25 km/h time spent (%)	1%	2%	1%	2%	
Zone 5: >25 km/h time spent (%)					
Distance covered (metres)	5,639	5,838	11,477	112,490	10,745
Zone 1: 0-7 km/h distance covered (meters)	1,854	2,080	3,934	44,135	4,027
Zone 2: 7-15 km/h distance covered (meters)	2,539	2,449	4,988	45,046	4,407
Zone 3: 15-20 km/h distance covered (meters)	996	937	1,933	14,978	1,482
Zone 4: 20-25 km/h distance covered (meters)	201	304	505	6,246	622
Zone 5: >25 km/h distance covered (meters)	49	68	117	2,085	207
Top speed (km/h)	27.18	26.64	27.18	30.60	27.86
Sprints	10	15	25	366	36

Distance



Time spent



* Team average does not include goalkeeper

FIFA does not vouch for the accuracy of technical statistics compiled in association with its competition results system partner.



Player Statistics



Group E

Serbia - Switzerland 1 : 2 (1 : 0)

26 22 JUN 2018 20:00 Kaliningrad / Kaliningrad Stadium / RUS



Switzerland

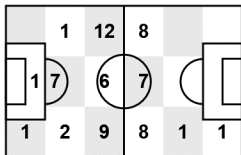
Time played 97'59"

11 Valon BEHRAMI

Midfield

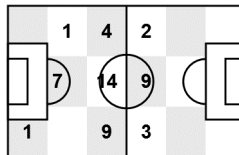
	1st half	2nd half	Total	Team total	Team avg *
Goal(s) scored				2	
Shots				20	
Assist(s)				1	
Offside(s)				3	
Save(s)				2	
Yellow card				1	
2Y+R/Red card					
Foul(s) committed		1	1	12	
Delivery/solo runs into the attacking third				34/14	3.40/1.40
Delivery/solo runs into the penalty area				9/1	0.90/0.10
Tackles gaining/not gaining the ball				4/10	0.40/1.00
Tackles suffered losing/not losing the ball				4/7	0.40/0.70
Clearances completed/attempted		1/1	1/1	16/17	1.20/1.30

Passing distribution



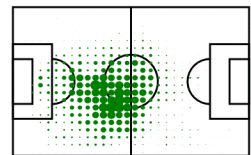
Direction of play →

Received passing distribution



Direction of play →

Heat map

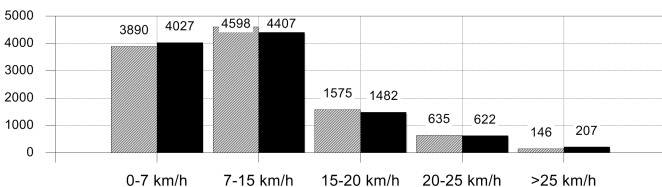


Direction of play →

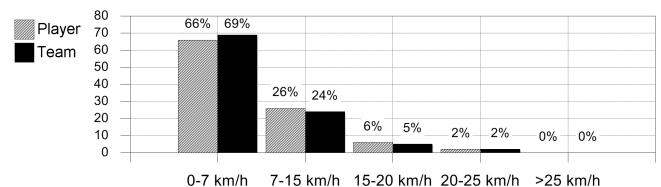
Activities

	1st half	2nd half	Total	Team total	Team avg *
Total time played (mins)	47'07"	50'52"	97'59"	97'59"	
Zone 1: 0-7 km/h time spent (%)	67%	65%	66%	69%	
Zone 2: 7-15 km/h time spent (%)	26%	27%	26%	24%	
Zone 3: 15-20 km/h time spent (%)	5%	6%	6%	5%	
Zone 4: 20-25 km/h time spent (%)	2%	2%	2%	2%	
Zone 5: >25 km/h time spent (%)					
Distance covered (metres)	5,216	5,628	10,844	112,490	10,745
Zone 1: 0-7 km/h distance covered (meters)	1,959	1,931	3,890	44,135	4,027
Zone 2: 7-15 km/h distance covered (meters)	2,148	2,450	4,598	45,046	4,407
Zone 3: 15-20 km/h distance covered (meters)	741	834	1,575	14,978	1,482
Zone 4: 20-25 km/h distance covered (meters)	296	339	635	6,246	622
Zone 5: >25 km/h distance covered (meters)	72	74	146	2,085	207
Top speed (km/h)	29.48	29.02	29.48	30.60	27.86
Sprints	16	17	33	366	36

Distance



Time spent



* Team average does not include goalkeeper

FIFA does not vouch for the accuracy of technical statistics compiled in association with its competition results system partner.



Player Statistics



Group E

Serbia - Switzerland 1 : 2 (1 : 0)

26 22 JUN 2018 20:00 Kaliningrad / Kaliningrad Stadium / RUS



Switzerland

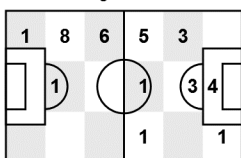
Time played 97'59"

13 Ricardo RODRIGUEZ

Defender

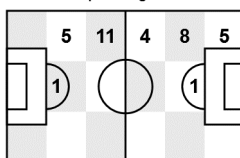
	1st half	2nd half	Total	Team total	Team avg *
Goal(s) scored				2	
Shots		2	2	20	
Assist(s)				1	
Offside(s)				3	
Save(s)				2	
Yellow card				1	
2Y+R/Red card					
Foul(s) committed	1	2	3	12	
Delivery/solo runs into the attacking third		3/0	3/0	34/14	3.40/1.40
Delivery/solo runs into the penalty area	3/0	1/0	4/0	9/1	0.90/0.10
Tackles gaining/not gaining the ball		1/2	1/2	4/10	0.40/1.00
Tackles suffered losing/not losing the ball				4/7	0.40/0.70
Clearances completed/attempted		1/1	1/1	16/17	1.20/1.30

Passing distribution



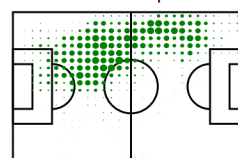
Direction of play →

Received passing distribution



Direction of play →

Heat map

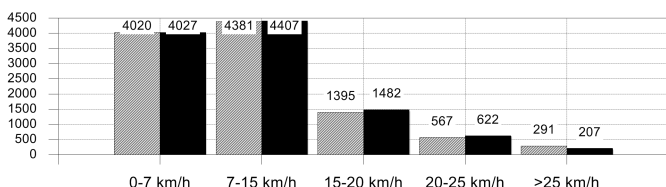


Direction of play →

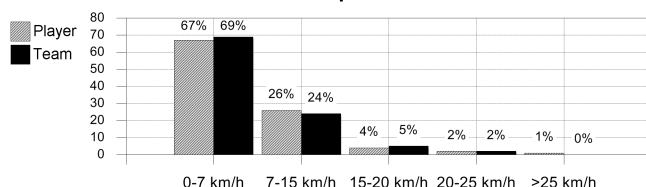
Activities

	1st half	2nd half	Total	Team total	Team avg *
Total time played (mins)	47'07"	50'52"	97'59"	97'59"	
Zone 1: 0-7 km/h time spent (%)	66%	68%	67%	69%	
Zone 2: 7-15 km/h time spent (%)	27%	24%	26%	24%	
Zone 3: 15-20 km/h time spent (%)	5%	5%	4%	5%	
Zone 4: 20-25 km/h time spent (%)	1%	2%	2%	2%	
Zone 5: >25 km/h time spent (%)	1%	1%	1%		
Distance covered (metres)	5,175	5,479	10,654	112,490	10,745
Zone 1: 0-7 km/h distance covered (meters)	1,896	2,124	4,020	44,135	4,027
Zone 2: 7-15 km/h distance covered (meters)	2,239	2,142	4,381	45,046	4,407
Zone 3: 15-20 km/h distance covered (meters)	662	733	1,395	14,978	1,482
Zone 4: 20-25 km/h distance covered (meters)	255	312	567	6,246	622
Zone 5: >25 km/h distance covered (meters)	123	168	291	2,085	207
Top speed (km/h)	29.02	29.02	29.02	30.60	27.86
Sprints	16	20	36	366	36

Distance



Time spent



* Team average does not include goalkeeper

FIFA does not vouch for the accuracy of technical statistics compiled in association with its competition results system partner.



Player Statistics



Group E

Serbia - Switzerland 1 : 2 (1 : 0)

26 22 JUN 2018 20:00 Kaliningrad / Kaliningrad Stadium / RUS



Switzerland

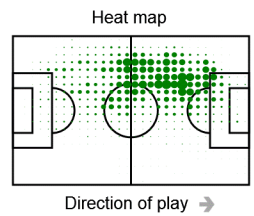
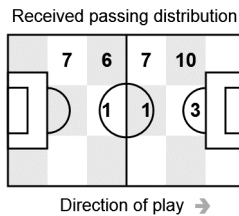
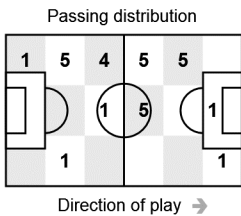
14 Steven ZUBER

Midfield

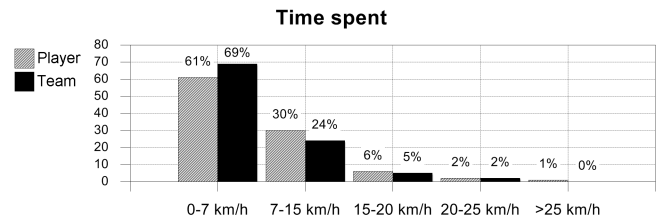
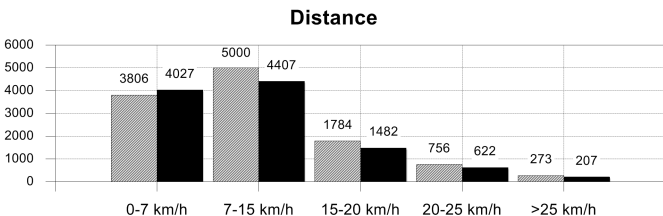
Time played 95'12"

Substituted by 19 Josip DRMIC

	1st half	2nd half	Total	Team total	Team avg *
Goal(s) scored				2	
Shots				20	
Assist(s)				1	
Offside(s)		1	1	3	
Save(s)				2	
Yellow card				1	
2Y+R/Red card					
Foul(s) committed				12	
Delivery/solo runs into the attacking third	0/3	0/1	0/4	34/14	3.40/1.40
Delivery/solo runs into the penalty area	1/0	1/0	2/0	9/1	0.90/0.10
Tackles gaining/not gaining the ball				4/10	0.40/1.00
Tackles suffered losing/not losing the ball				4/7	0.40/0.70
Clearances completed/attempted	1/1		1/1	16/17	1.20/1.30



Activities	1st half	2nd half	Total	Team total	Team avg *
Total time played (mins)	47'07"	48'05"	95'12"	97'59"	
Zone 1: 0-7 km/h time spent (%)	61%	61%	61%	69%	
Zone 2: 7-15 km/h time spent (%)	30%	29%	30%	24%	
Zone 3: 15-20 km/h time spent (%)	7%	6%	6%	5%	
Zone 4: 20-25 km/h time spent (%)	2%	3%	2%	2%	
Zone 5: >25 km/h time spent (%)		1%	1%		
Distance covered (metres)	5,643	5,976	11,619	112,490	10,745
Zone 1: 0-7 km/h distance covered (meters)	1,881	1,925	3,806	44,135	4,027
Zone 2: 7-15 km/h distance covered (meters)	2,533	2,467	5,000	45,046	4,407
Zone 3: 15-20 km/h distance covered (meters)	846	938	1,784	14,978	1,482
Zone 4: 20-25 km/h distance covered (meters)	281	475	756	6,246	622
Zone 5: >25 km/h distance covered (meters)	102	171	273	2,085	207
Top speed (km/h)	28.58	28.37	28.58	30.60	27.86
Sprints	18	28	46	366	36



* Team average does not include goalkeeper

FIFA does not vouch for the accuracy of technical statistics compiled in association with its competition results system partner.



Player Statistics



Group E

Serbia - Switzerland 1 : 2 (1 : 0)

26 22 JUN 2018 20:00 Kaliningrad / Kaliningrad Stadium / RUS



Switzerland

15 Blerim DZEMAILI

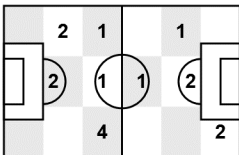
Midfield

Time played 74'21"

Substituted by 7 Breel EMBOLO

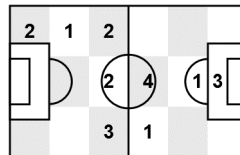
	1st half	2nd half	Total	Team total	Team avg *
Goal(s) scored				2	
Shots	2		2	20	
Assist(s)				1	
Offside(s)				3	
Save(s)				2	
Yellow card				1	
2Y+R/Red card					
Foul(s) committed		1	1	12	
Delivery/solo runs into the attacking third	1/0	1/0	2/0	34/14	3.40/1.40
Delivery/solo runs into the penalty area				9/1	0.90/0.10
Tackles gaining/not gaining the ball	1/0		1/0	4/10	0.40/1.00
Tackles suffered losing/not losing the ball	1/0	1/0	2/0	4/7	0.40/0.70
Clearances completed/attempted				16/17	1.20/1.30

Passing distribution



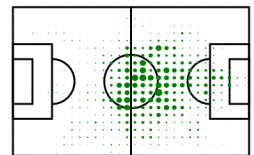
Direction of play →

Received passing distribution



Direction of play →

Heat map

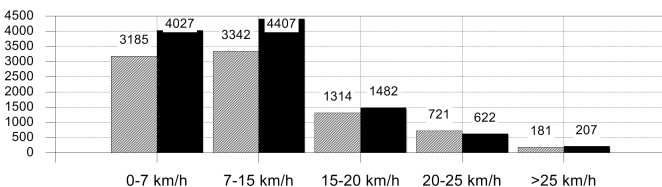


Direction of play →

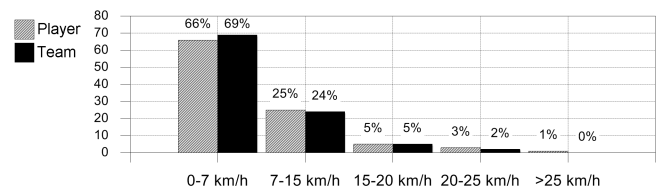
Activities

	1st half	2nd half	Total	Team total	Team avg *
Total time played (mins)	47'07"	27'14"	74'21"	97'59"	
Zone 1: 0-7 km/h time spent (%)	65%	66%	66%	69%	
Zone 2: 7-15 km/h time spent (%)	25%	25%	25%	24%	
Zone 3: 15-20 km/h time spent (%)	8%	5%	5%	5%	
Zone 4: 20-25 km/h time spent (%)	2%	3%	3%	2%	
Zone 5: >25 km/h time spent (%)		1%	1%		
Distance covered (metres)	5,575	3,168	8,743	112,490	10,745
Zone 1: 0-7 km/h distance covered (meters)	1,991	1,194	3,185	44,135	4,027
Zone 2: 7-15 km/h distance covered (meters)	2,165	1,177	3,342	45,046	4,407
Zone 3: 15-20 km/h distance covered (meters)	900	414	1,314	14,978	1,482
Zone 4: 20-25 km/h distance covered (meters)	425	296	721	6,246	622
Zone 5: >25 km/h distance covered (meters)	94	87	181	2,085	207
Top speed (km/h)	24.66	25.20	25.20	30.60	27.86
Sprints	26	17	43	366	36

Distance



Time spent



* Team average does not include goalkeeper

FIFA does not vouch for the accuracy of technical statistics compiled in association with its competition results system partner.



Player Statistics



Group E

Serbia - Switzerland 1 : 2 (1 : 0)

26 22 JUN 2018 20:00 Kaliningrad / Kaliningrad Stadium / RUS



Switzerland

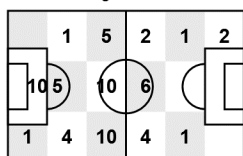
Time played 97'59"

22 Fabian SCHAER

Defender

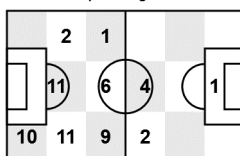
	1st half	2nd half	Total	Team total	Team avg *
Goal(s) scored				2	
Shots	1		1	20	
Assist(s)				1	
Offside(s)				3	
Save(s)				2	
Yellow card				1	
2Y+R/Red card					
Foul(s) committed	1		1	12	
Delivery/solo runs into the attacking third	2/0	2/0	4/0	34/14	3.40/1.40
Delivery/solo runs into the penalty area		1/0	1/0	9/1	0.90/0.10
Tackles gaining/not gaining the ball	0/1	1/1	1/2	4/10	0.40/1.00
Tackles suffered losing/not losing the ball		0/1	0/1	4/7	0.40/0.70
Clearances completed/attempted	2/2	3/3	5/5	16/17	1.20/1.30

Passing distribution



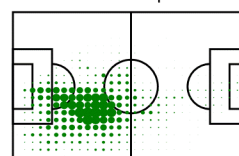
Direction of play →

Received passing distribution



Direction of play →

Heat map

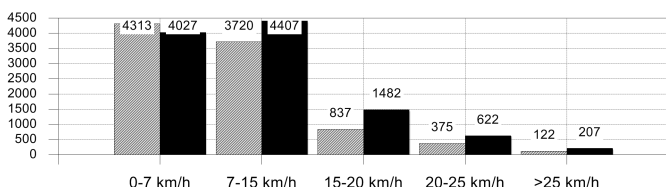


Direction of play →

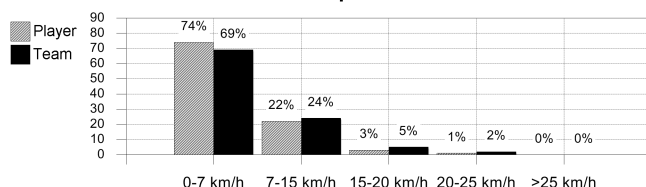
Activities

	1st half	2nd half	Total	Team total	Team avg *
Total time played (mins)	47'07"	50'52"	97'59"	97'59"	
Zone 1: 0-7 km/h time spent (%)	73%	75%	74%	69%	
Zone 2: 7-15 km/h time spent (%)	23%	20%	22%	24%	
Zone 3: 15-20 km/h time spent (%)	3%	4%	3%	5%	
Zone 4: 20-25 km/h time spent (%)	1%	1%	1%	2%	
Zone 5: >25 km/h time spent (%)					
Distance covered (metres)	4,517	4,850	9,367	112,490	10,745
Zone 1: 0-7 km/h distance covered (meters)	2,014	2,299	4,313	44,135	4,027
Zone 2: 7-15 km/h distance covered (meters)	1,940	1,780	3,720	45,046	4,407
Zone 3: 15-20 km/h distance covered (meters)	352	485	837	14,978	1,482
Zone 4: 20-25 km/h distance covered (meters)	152	223	375	6,246	622
Zone 5: >25 km/h distance covered (meters)	59	63	122	2,085	207
Top speed (km/h)	25.56	27.22	27.22	30.60	27.86
Sprints	10	8	18	366	36

Distance



Time spent



* Team average does not include goalkeeper

FIFA does not vouch for the accuracy of technical statistics compiled in association with its competition results system partner.



Player Statistics



Group E

Serbia - Switzerland 1 : 2 (1 : 0)

26 22 JUN 2018 20:00 Kaliningrad / Kaliningrad Stadium / RUS



Switzerland

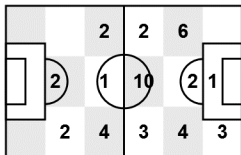
Time played 97'59"

23 Xherdan SHAQIRI

Midfield

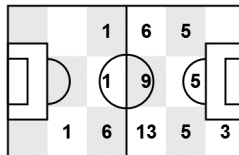
	1st half	2nd half	Total	Team total	Team avg *
Goal(s) scored		1	1	2	
Shots	3	5	8	20	
Assist(s)				1	
Offside(s)				3	
Save(s)				2	
Yellow card		1	1	1	
2Y+R/Red card					
Foul(s) committed	1	1	2	12	
Delivery/solo runs into the attacking third	2/2	2/4	4/6	34/14	3.40/1.40
Delivery/solo runs into the penalty area	1/0	0/1	1/1	9/1	0.90/0.10
Tackles gaining/not gaining the ball				4/10	0.40/1.00
Tackles suffered losing/not losing the ball	1/1		1/1	4/7	0.40/0.70
Clearances completed/attempted	1/1		1/1	16/17	1.20/1.30

Passing distribution



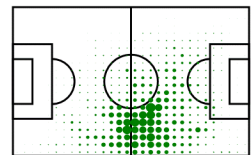
Direction of play →

Received passing distribution



Direction of play →

Heat map

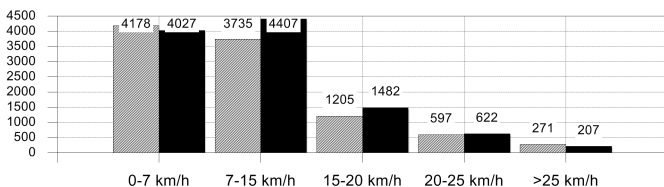


Direction of play →

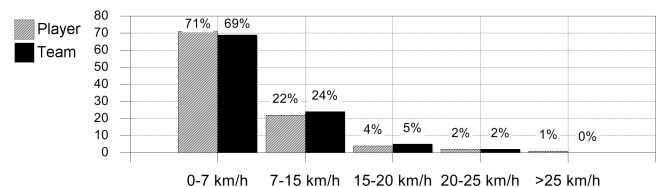
Activities

	1st half	2nd half	Total	Team total	Team avg *
Total time played (mins)	47'07"	50'52"	97'59"	97'59"	
Zone 1: 0-7 km/h time spent (%)	70%	72%	71%	69%	
Zone 2: 7-15 km/h time spent (%)	23%	21%	22%	24%	
Zone 3: 15-20 km/h time spent (%)	6%	4%	4%	5%	
Zone 4: 20-25 km/h time spent (%)	1%	2%	2%	2%	
Zone 5: >25 km/h time spent (%)		1%	1%		
Distance covered (metres)	4,786	5,200	9,986	112,490	10,745
Zone 1: 0-7 km/h distance covered (meters)	1,973	2,205	4,178	44,135	4,027
Zone 2: 7-15 km/h distance covered (meters)	1,885	1,850	3,735	45,046	4,407
Zone 3: 15-20 km/h distance covered (meters)	644	561	1,205	14,978	1,482
Zone 4: 20-25 km/h distance covered (meters)	217	380	597	6,246	622
Zone 5: >25 km/h distance covered (meters)	67	204	271	2,085	207
Top speed (km/h)	28.80	29.02	29.02	30.60	27.86
Sprints	14	28	42	366	36

Distance



Time spent



* Team average does not include goalkeeper

FIFA does not vouch for the accuracy of technical statistics compiled in association with its competition results system partner.



Player Statistics



Group E

Serbia - Switzerland 1 : 2 (1 : 0)

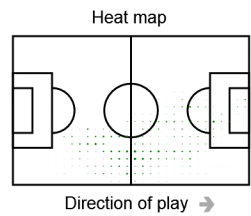
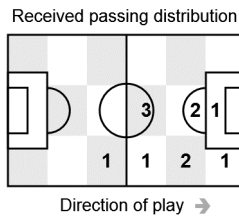
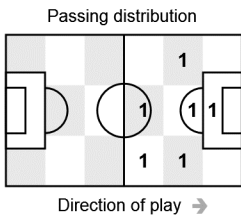
26 22 JUN 2018 20:00 Kaliningrad / Kaliningrad Stadium / RUS



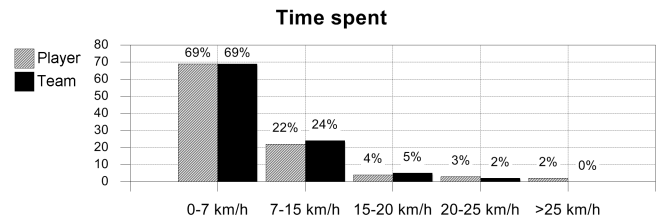
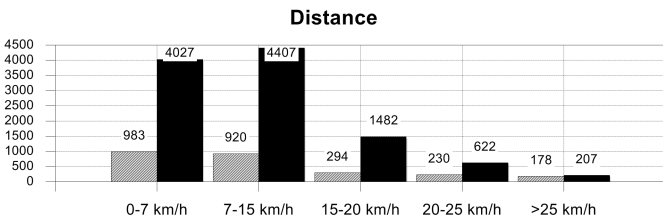
Switzerland
7 Breel EMOLO
 Forward

Time played 23'38"
 Replacing 15 Blerim DZEMAILI

	1st half	2nd half	Total	Team total	Team avg *
Goal(s) scored				2	
Shots		1	1	20	
Assist(s)				1	
Offside(s)				3	
Save(s)				2	
Yellow card				1	
2Y+R/Red card					
Foul(s) committed				12	
Delivery/solo runs into the attacking third		2/1	2/1	34/14	3.40/1.40
Delivery/solo runs into the penalty area		1/0	1/0	9/1	0.90/0.10
Tackles gaining/not gaining the ball				4/10	0.40/1.00
Tackles suffered losing/not losing the ball		0/1	0/1	4/7	0.40/0.70
Clearances completed/attempted				16/17	1.20/1.30



Activities	1st half	2nd half	Total	Team total	Team avg *
Total time played (mins)		23'38"	23'38"	97'59"	
Zone 1: 0-7 km/h time spent (%)		69%	69%	69%	
Zone 2: 7-15 km/h time spent (%)		22%	22%	24%	
Zone 3: 15-20 km/h time spent (%)		4%	4%	5%	
Zone 4: 20-25 km/h time spent (%)		3%	3%	2%	
Zone 5: >25 km/h time spent (%)		2%	2%		
Distance covered (metres)		2,605	2,605	112,490	10,745
Zone 1: 0-7 km/h distance covered (meters)		983	983	44,135	4,027
Zone 2: 7-15 km/h distance covered (meters)		920	920	45,046	4,407
Zone 3: 15-20 km/h distance covered (meters)		294	294	14,978	1,482
Zone 4: 20-25 km/h distance covered (meters)		230	230	6,246	622
Zone 5: >25 km/h distance covered (meters)		178	178	2,085	207
Top speed (km/h)		29.92	29.92	30.60	27.86
Sprints		15	15	366	36



* Team average does not include goalkeeper

FIFA does not vouch for the accuracy of technical statistics compiled in association with its competition results system partner.



Player Statistics



Group E

Serbia - Switzerland 1 : 2 (1 : 0)

26 22 JUN 2018 20:00 Kaliningrad / Kaliningrad Stadium / RUS



Switzerland

18 Mario GAVRANOVIC

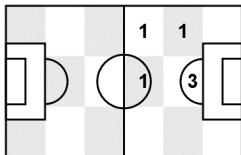
Forward

Time played 50'52"

Replacing 9 Haris SEFEROVIC

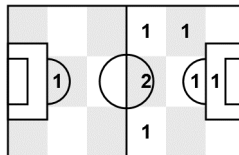
	1st half	2nd half	Total	Team total	Team avg *
Goal(s) scored				2	
Shots		1	1	20	
Assist(s)		1	1	1	
Offside(s)		1	1	3	
Save(s)				2	
Yellow card				1	
2Y+R/Red card					
Foul(s) committed		1	1	12	
Delivery/solo runs into the attacking third		2/0	2/0	34/14	3.40/1.40
Delivery/solo runs into the penalty area				9/1	0.90/0.10
Tackles gaining/not gaining the ball				4/10	0.40/1.00
Tackles suffered losing/not losing the ball		0/1	0/1	4/7	0.40/0.70
Clearances completed/attempted				16/17	1.20/1.30

Passing distribution



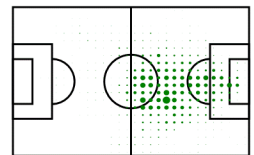
Direction of play →

Received passing distribution



Direction of play →

Heat map

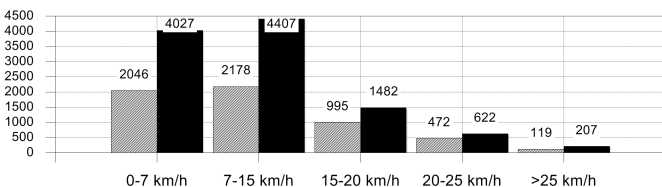


Direction of play →

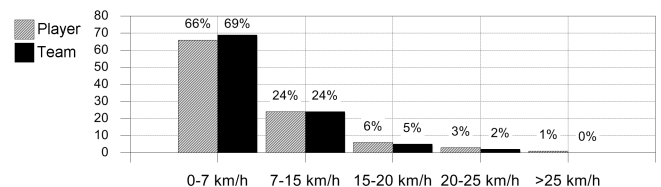
Activities

	1st half	2nd half	Total	Team total	Team avg *
Total time played (mins)		50'52"	50'52"	97'59"	
Zone 1: 0-7 km/h time spent (%)		66%	66%	69%	
Zone 2: 7-15 km/h time spent (%)		24%	24%	24%	
Zone 3: 15-20 km/h time spent (%)		6%	6%	5%	
Zone 4: 20-25 km/h time spent (%)		3%	3%	2%	
Zone 5: >25 km/h time spent (%)		1%	1%		
Distance covered (metres)		5,810	5,810	112,490	10,745
Zone 1: 0-7 km/h distance covered (meters)		2,046	2,046	44,135	4,027
Zone 2: 7-15 km/h distance covered (meters)		2,178	2,178	45,046	4,407
Zone 3: 15-20 km/h distance covered (meters)		995	995	14,978	1,482
Zone 4: 20-25 km/h distance covered (meters)		472	472	6,246	622
Zone 5: >25 km/h distance covered (meters)		119	119	2,085	207
Top speed (km/h)		29.02	29.02	30.60	27.86
Sprints		28	28	366	36

Distance



Time spent



* Team average does not include goalkeeper

FIFA does not vouch for the accuracy of technical statistics compiled in association with its competition results system partner.



Player Statistics



Group E

Serbia - Switzerland 1 : 2 (1 : 0)

26 22 JUN 2018 20:00 Kaliningrad / Kaliningrad Stadium / RUS



Switzerland

19 Josip DRMIC

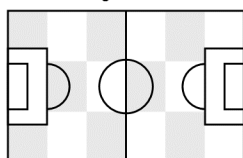
Forward

Time played 2'47"

Replacing 14 Steven ZUBER

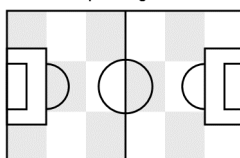
	1st half	2nd half	Total	Team total	Team avg *
Goal(s) scored				2	
Shots				20	
Assist(s)				1	
Offside(s)				3	
Save(s)				2	
Yellow card				1	
2Y+R/Red card					
Foul(s) committed				12	
Delivery/solo runs into the attacking third				34/14	3.40/1.40
Delivery/solo runs into the penalty area				9/1	0.90/0.10
Tackles gaining/not gaining the ball				4/10	0.40/1.00
Tackles suffered losing/not losing the ball				4/7	0.40/0.70
Clearances completed/attempted				16/17	1.20/1.30

Passing distribution



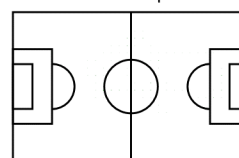
Direction of play →

Received passing distribution



Direction of play →

Heat map

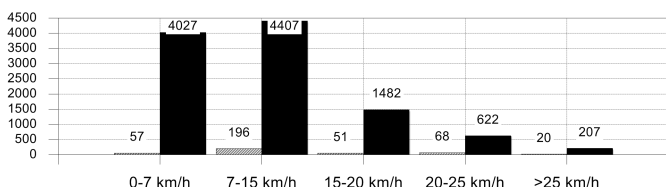


Direction of play →

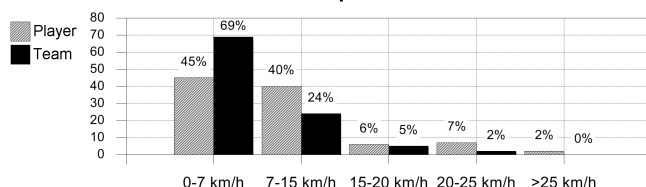
Activities

	1st half	2nd half	Total	Team total	Team avg *
Total time played (mins)		2'47"	2'47"	97'59"	
Zone 1: 0-7 km/h time spent (%)		45%	45%	69%	
Zone 2: 7-15 km/h time spent (%)		40%	40%	24%	
Zone 3: 15-20 km/h time spent (%)		6%	6%	5%	
Zone 4: 20-25 km/h time spent (%)		7%	7%	2%	
Zone 5: >25 km/h time spent (%)		2%	2%		
Distance covered (metres)		392	392	112,490	10,745
Zone 1: 0-7 km/h distance covered (meters)		57	57	44,135	4,027
Zone 2: 7-15 km/h distance covered (meters)		196	196	45,046	4,407
Zone 3: 15-20 km/h distance covered (meters)		51	51	14,978	1,482
Zone 4: 20-25 km/h distance covered (meters)		68	68	6,246	622
Zone 5: >25 km/h distance covered (meters)		20	20	2,085	207
Top speed (km/h)		24.12	24.12	30.60	27.86
Sprints		3	3	366	36

Distance



Time spent



* Team average does not include goalkeeper

FIFA does not vouch for the accuracy of technical statistics compiled in association with its competition results system partner.

